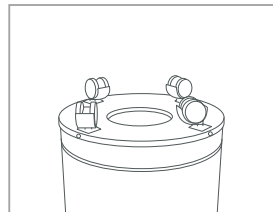


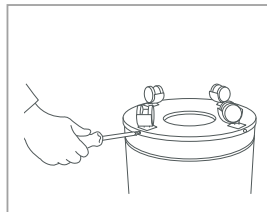
A Message for the Client

FILTER ASSEMBLY D, DS, DX & 6000 MODELS

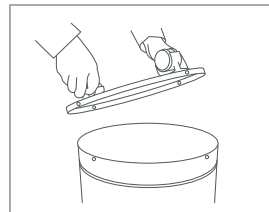
The model you have selected is shipped in 2 separate boxes to protect certain components. The filter comes in one box, and the outer shell of the unit, containing the motor and the fan, comes in another. Filters must be installed before turning the unit on in order for it to work. AllerAir technicians recommend removing the base, installing the filter, and replacing the base according to the following steps:



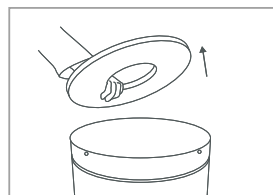
Step 1
Make sure the unit is set to "Off," and **unplug it**. Lay the unit upside down, so that the wheels face up.



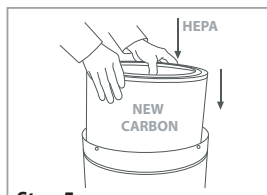
Step 2
Using a #2 Philips screwdriver, remove the four screws that hold the base onto the unit.



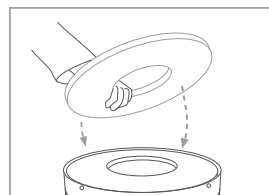
Step 3
Grasp the wheels. Remove the base by pulling gently on the wheels.



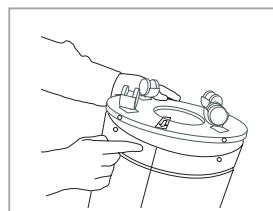
Step 4
Reach inside the unit, and remove only 1 of the 2 felt pads.



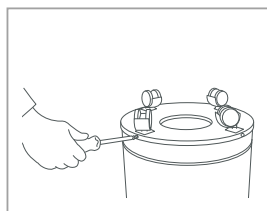
Step 5
Gently insert the carbon filter (either a Model D, DS or DX Carbon) into the unit, either end up. **For 6000 Carbon/Hepa Models** Insert carbon canister, then Hepa in center



Step 6
Put back the felt pad removed in **STEP 4**.



Step 7
Replace the base, making sure the arrow on the gold sticker lines up with unit's rear seam.



Step 8
Replace the four screws.

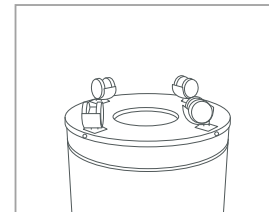


Step 9
Turn the unit back onto its wheels. It is now ready for use.

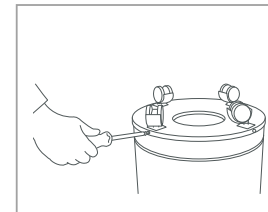
A Message for the Client

FILTER ASSEMBLY D, DS, DX & 6000 MODELS

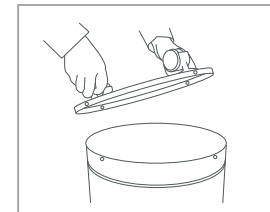
The model you have selected is shipped in 2 separate boxes to protect certain components. The filter comes in one box, and the outer shell of the unit, containing the motor and the fan, comes in another. Filters must be installed before turning the unit on in order for it to work. AllerAir technicians recommend removing the base, installing the filter, and replacing the base according to the following steps:



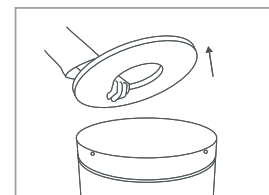
Step 1
Make sure the unit is set to "Off," and **unplug it**. Lay the unit upside down, so that the wheels face up.



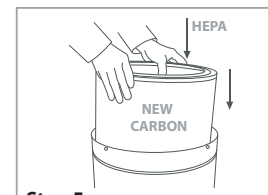
Step 2
Using a #2 Philips screwdriver, remove the four screws that hold the base onto the unit.



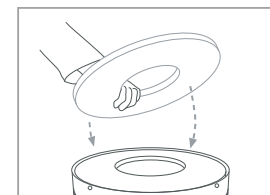
Step 3
Grasp the wheels. Remove the base by pulling gently on the wheels.



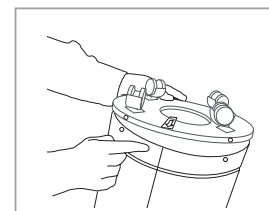
Step 4
Reach inside the unit, and remove only 1 of the 2 felt pads.



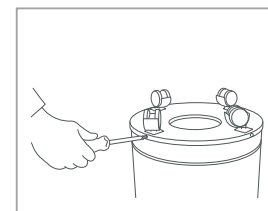
Step 5
Gently insert the carbon filter (either a Model D, DS or DX Carbon) into the unit, either end up. **For 6000 Carbon/Hepa Models** Insert carbon canister, then Hepa in center



Step 6
Put back the felt pad removed in **STEP 4**.



Step 7
Replace the base, making sure the arrow on the gold sticker lines up with unit's rear seam.



Step 8
Replace the four screws.



Step 9
Turn the unit back onto its wheels. It is now ready for use.